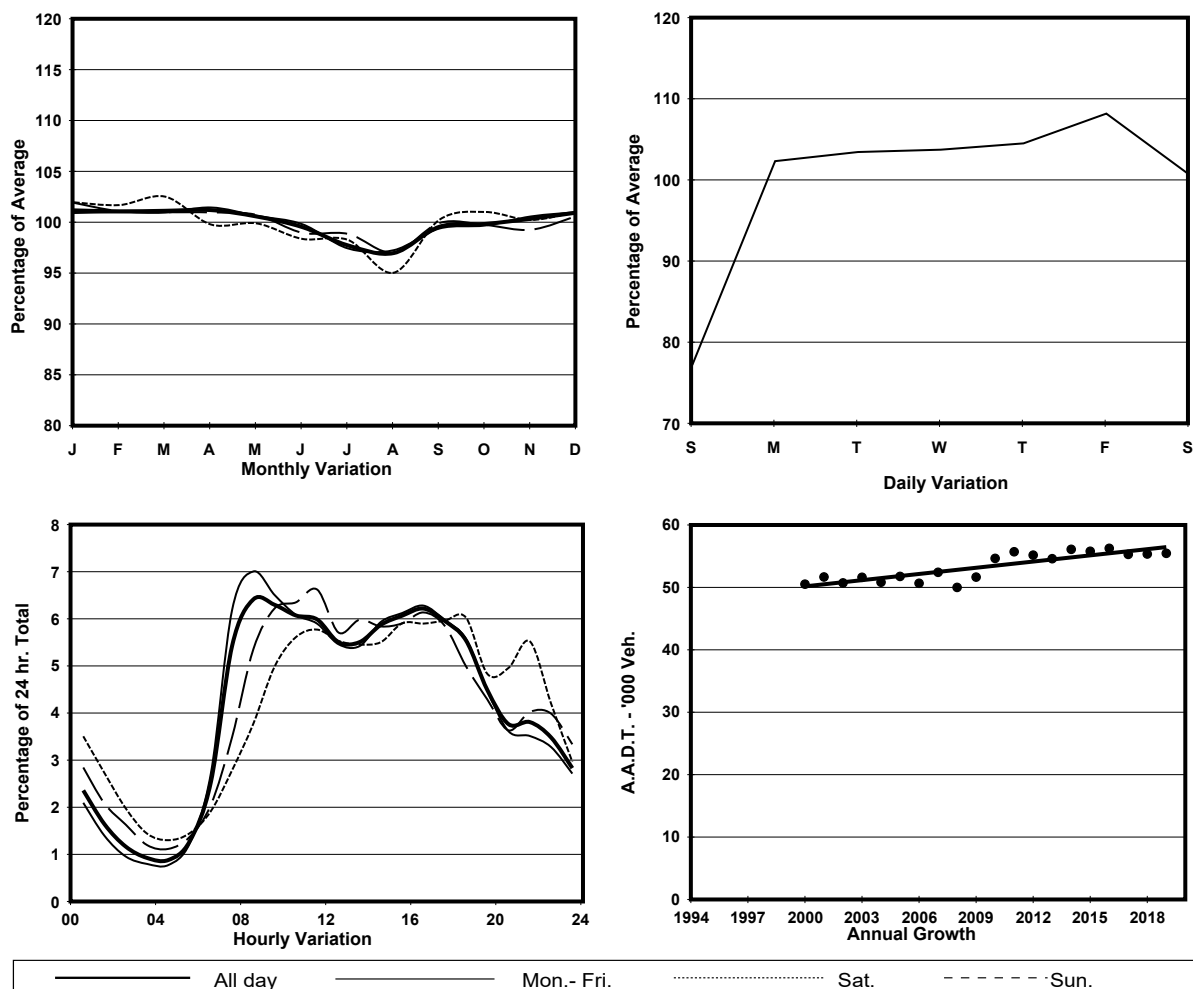


YEAR 2019

LINK ISLAND EASTERN CORRIDOR (from MONG LUNG ST to WING TAI RD INT)

COVERAGE (B) STATION 2215
ROAD NETWORK MAJOR
ROAD TYPE EXPRESSWAY

1. TRAFFIC FLOW VARIATION AND GROWTH



2. TRAFFIC CHARACTERISTICS (BY DIRECTION)

Parameter	All - Day	Mon. - Fri.	Sat.	Sun.
EAST BOUND				
A.A.D.T.	27180	28700	27710	21410
R 12 / 24 - %	69.1	71	66.2	60.8
R 16 / 24 - %	86.3	87.5	83.7	82.2
AM Peak Hour	0900-1000	0900-1000	0900-1000	0900-1000
One-way flow at AM peak hour	1690	1880	1600	940
T - % (AM)	-	19.5	-	-
PM Peak Hour	1600-1700	1600-1700	1600-1700	1700-1800
One-way flow at PM peak hour	1750	1880	1750	1330
T - % (PM)	-	11.9	-	-
Prop.of commercial vehicles - 16 hr.	-	13.1	-	-
WEST BOUND				
A.A.D.T.	28280	29930	28770	22000
R 12 / 24 - %	72.5	73.9	70.6	65.6
R 16 / 24 - %	86.5	87.2	85	83.2
AM Peak Hour	0800-0900	0800-0900	0900-1000	0900-1000
One-way flow at AM peak hour	1990	2300	1910	1220
T - % (AM)	-	8.7	-	-
PM Peak Hour	1700-1800	1700-1800	1700-1800	1800-1900
One-way flow at PM peak hour	1750	1880	1760	1310
T - % (PM)	-	11.7	-	-
Prop.of commercial vehicles - 16 hr.	-	12.1	-	-

3. OTHER INFORMATION AND COMMENT

4. Vehicle classification and occupancy - Monday to Friday

Time		Class of vehicle									
		Motor Cycle	Private Car	Taxi	Private LB	PLB	Goods veh.		Non Fr. Bus	Fr. Bus	
							Light	M & H		SD	DD
0700-0800	Pro	6.2	30.4	23.4	2.0	0.0	21.9	5.4	5.5	0.1	5.2
	Ocp	1.1	1.3	2.1	7.2	0.0	1.4	1.3	13.6	1.0	36.3
0800-0900 Peak hour	Pro	4.8	46.2	18.1	2.5	0.0	18.3	4.6	2.5	0.0	3.1
	Ocp	1.1	1.4	2.1	3.4	0.0	1.5	1.1	11.7	0.0	46.1
0900-1000	Pro	2.6	31.7	18.5	2.7	0.0	28.8	7.7	3.7	0.1	4.3
	Ocp	1.0	1.3	1.9	1.9	0.0	1.5	1.3	1.2	1.0	19.5
1000-1100	Pro	3.1	36.8	15.3	1.5	0.0	30.0	8.3	1.3	0.0	3.7
	Ocp	1.0	1.4	1.8	3.2	0.0	1.4	1.3	7.4	0.0	15.6
1100-1200	Pro	4.3	34.7	16.7	2.8	0.0	27.3	8.7	2.8	0.1	2.8
	Ocp	1.1	1.3	1.7	2.1	0.0	1.4	1.2	4.6	1.0	17.7
1200-1300	Pro	2.6	35.7	17.7	1.8	0.0	30.3	7.2	2.4	0.1	2.3
	Ocp	1.2	1.4	1.6	3.9	0.0	1.4	1.4	3.6	1.0	22.0
1300-1400	Pro	2.6	33.4	16.1	2.6	0.0	34.2	7.2	1.7	0.1	2.1
	Ocp	1.1	1.4	1.6	2.2	0.0	1.4	1.2	4.4	1.0	23.8
1400-1500	Pro	3.4	30.7	17.2	1.6	0.0	33.8	8.7	1.3	0.1	3.1
	Ocp	1.0	1.4	1.7	3.5	0.0	1.4	1.2	3.9	1.0	14.7
1500-1600	Pro	3.2	35.4	17.7	2.7	0.0	25.6	7.3	4.9	0.1	3.1
	Ocp	1.0	1.5	1.6	3.7	0.0	1.4	1.2	10.6	1.0	14.1
1600-1700	Pro	3.1	35.2	18.5	2.6	0.0	26.5	6.5	4.4	0.1	3.3
	Ocp	1.1	1.4	1.4	3.0	0.0	1.4	1.1	4.1	1.0	17.9
1700-1800	Pro	7.6	47.2	13.3	4.6	0.0	16.8	2.9	3.5	0.1	4.1
	Ocp	1.1	1.3	1.8	1.9	0.0	1.3	1.1	3.0	1.0	22.3
1800-1900	Pro	6.9	55.1	13.0	0.8	0.0	15.4	2.2	2.8	0.0	3.8
	Ocp	1.0	1.4	1.9	1.0	0.0	1.3	1.5	14.9	0.0	45.7
1900-2000	Pro	5.7	60.1	16.1	0.2	0.0	7.9	2.2	2.4	0.1	5.4
	Ocp	1.2	1.3	1.8	1.0	0.0	1.4	1.3	10.4	1.0	30.4
2000-2100	Pro	4.3	47.6	25.7	0.0	0.0	9.3	2.6	1.9	0.4	8.1
	Ocp	1.1	1.2	1.7	0.0	0.0	1.6	1.4	3.0	1.0	10.3
2100-2200	Pro	3.4	52.4	26.2	0.0	0.0	7.3	3.0	1.1	0.3	6.4
	Ocp	1.1	1.5	1.9	0.0	0.0	1.3	1.4	3.4	1.0	10.9
2200-2300	Pro	4.6	48.7	28.1	0.0	0.0	8.7	2.5	0.2	0.3	6.9
	Ocp	1.1	1.4	1.7	0.0	0.0	1.4	1.3	1.0	1.0	12.8
16 hours	Pro	4.2	40.3	18.2	2.0	0.0	22.8	5.7	2.8	0.1	3.9
	Ocp	1.1	1.4	1.8	3.0	0.0	1.4	1.2	7.2	1.0	22.9

Legend: Pro. Proportion of vehicles in % (Sum may not add up to 100% due to figure rounding)*

Ocp. Average occupancy of vehicles including both driver and passengers*

M&H Medium and Heavy

* All traffic data are collected from combined bounds